

FAR SOUNDER

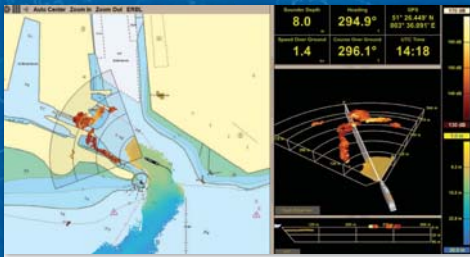
A WHOLE NEW VISION UNDERWATER



**FORWARD LOOKING NAVIGATION SONARS
FARSOUNDER-500 / FARSOUNDER-1000 SERIES**

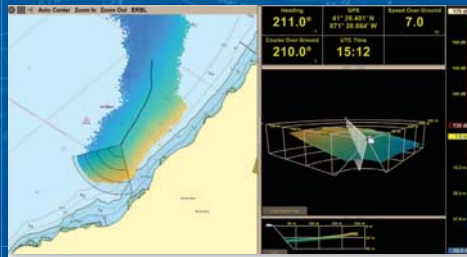
LEADING THE WAY IN 21ST CENTURY NAVIGATION

Innovative Technology



- ▶ Receive true, real-time 3D images
- ▶ Image updates with a single ping - no waiting for a sweep
- ▶ Chart plotting capabilities using vector charts
- ▶ **NEW** Local History Mapping (LHM) creates real-time charts everywhere you sail

Safe Navigation



- ▶ Get an underwater picture up to 1000 meters ahead of your vessel
- ▶ Detect hazards including icebergs before a dangerous situation occurs
- ▶ Navigate shallow waters comfortably
- ▶ Explore new bays, inlets and rivers waters safely
- ▶ Used by all types of vessels in oceans and seas around the globe

Easy Operation



- ▶ Use one system with a user friendly interface
- ▶ Streamline information with nautical chart overlay
- ▶ Enjoy the benefits of a fixed installation
- ▶ Sturdy, stationary equipment with no moving parts
- ▶ Simple to maintain

Environmentally Friendly



- ▶ Detect whales traversing your path
- ▶ Produces sounds safe for marine mammals
- ▶ Navigate away from sea life and coral reefs



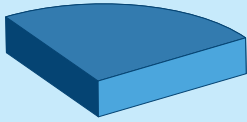
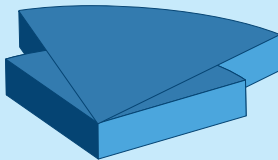
FARSOUNDER-500



FARSOUNDER-1000



Because your radar can't see underwater and your echosounder only points down.

| | FarSounder-500 | FarSounder-1000 |
|---|---|--|
| Range/Field of View |  100m, 200m, 500m x 90° |  100m, 200m, 500m x 90° 1000m x 60° |
| Operational Speed | Up to 20 knots | Up to 25 knots |
| Chart Overlay | C-MAP Norway, S-57 and S-6 | |
| 3D Forward Looking Display with True Target Motion™ | ✓ | |
| Bottom Mapping Range | 8x Water Depth | |
| Maximum Depth Detection | 50m (165 ft) | |
| Power Requirements | 110/220 V, 50/60 Hz @ ~120W | |
| Operating Frequency | 61 kHz | |
| Maximum Output Power | <1500 Wrms | |
| Angular Accuracy | ~1.6° | |
| Roll/Pitch Stabilization | +/- 20° | |
| Multi-Ping Target Stabilization | ✓ | |
| User Defined Automated Alarms | ✓ | |
| Display of Ship's Navigation Information | Heading, Course Over Ground, Lat/Lon, Speed, Echosounder Depth, Rate of Turn, NMEA 0183: RMC, GGL, GGA, VHW, VTG, HDT, HDG, DBT, DPT, ROT | |
| Operating System | Windows 7 | |
| Integration into 3rd Party ECDIS/ECS | Wärtsilä Nacos Platinum, Transas, Sperry-Marine | |
| SDK Available | ✓ | |

FarSounder, Inc.
151 Lavan Street
Warwick, RI 02888
USA

**FAR
SOUNDER**
A WHOLE NEW VISION UNDERWATER

+1 401-784-6700
info@farsounder.com
www.farsounder.com